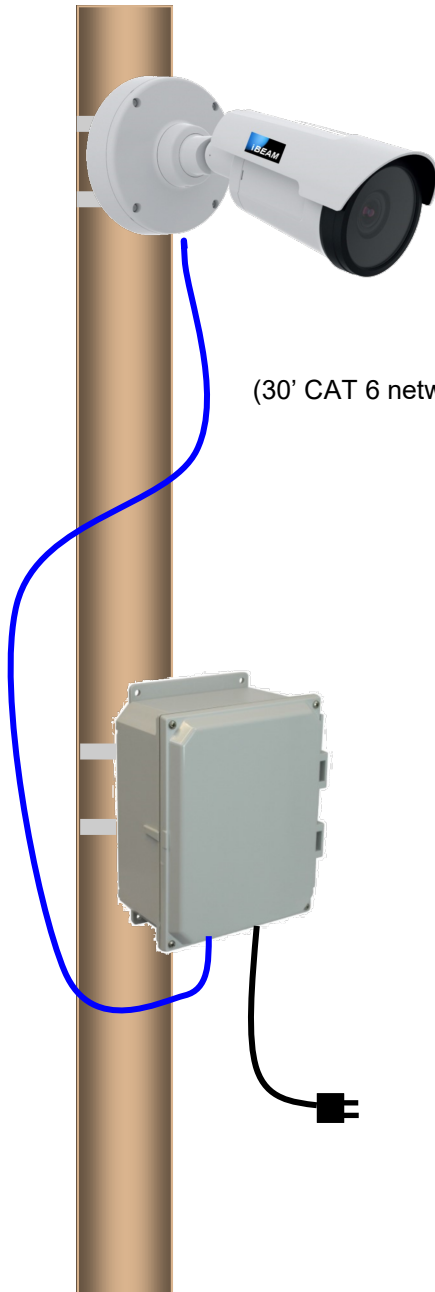




iBEAM® OnSite Fixed 4K Construction Camera with Cellular Communication (120V AC) INSTALLATION INSTRUCTIONS



(30' CAT 6 network cable provided)

1. Attach the camera to your pole using the provided straps.

2. Attach the communication box to your pole using the provided straps.

3. Feed the camera's network cable through the cable gland at the bottom of the communication box.

Plug the network cable into the power supply's "OUT" port.

Tighten the nut on the cable gland.

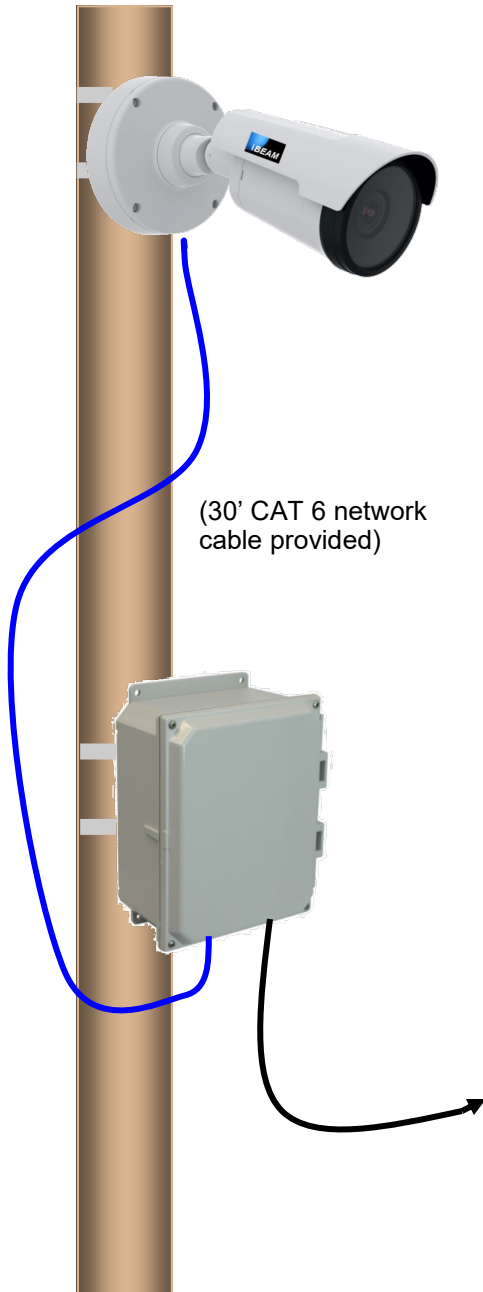
4. Plug the unit into 120V AC power.

5. View your camera by logging in at www.ibeamsystems.com

Call the iBEAM Support Team at 1.800.403.0688 to verify installation.



iBEAM® OnSite Fixed 4K Construction Camera with Cellular Communication (12V) INSTALLATION INSTRUCTIONS



1. Attach camera to your pole using the provided straps.
2. Attach the communication box to your pole using the provided straps.
3. Feed the camera's network cable through the cable gland at the bottom of the communication box .

Plug the network cable into the power supply's "camera" port.

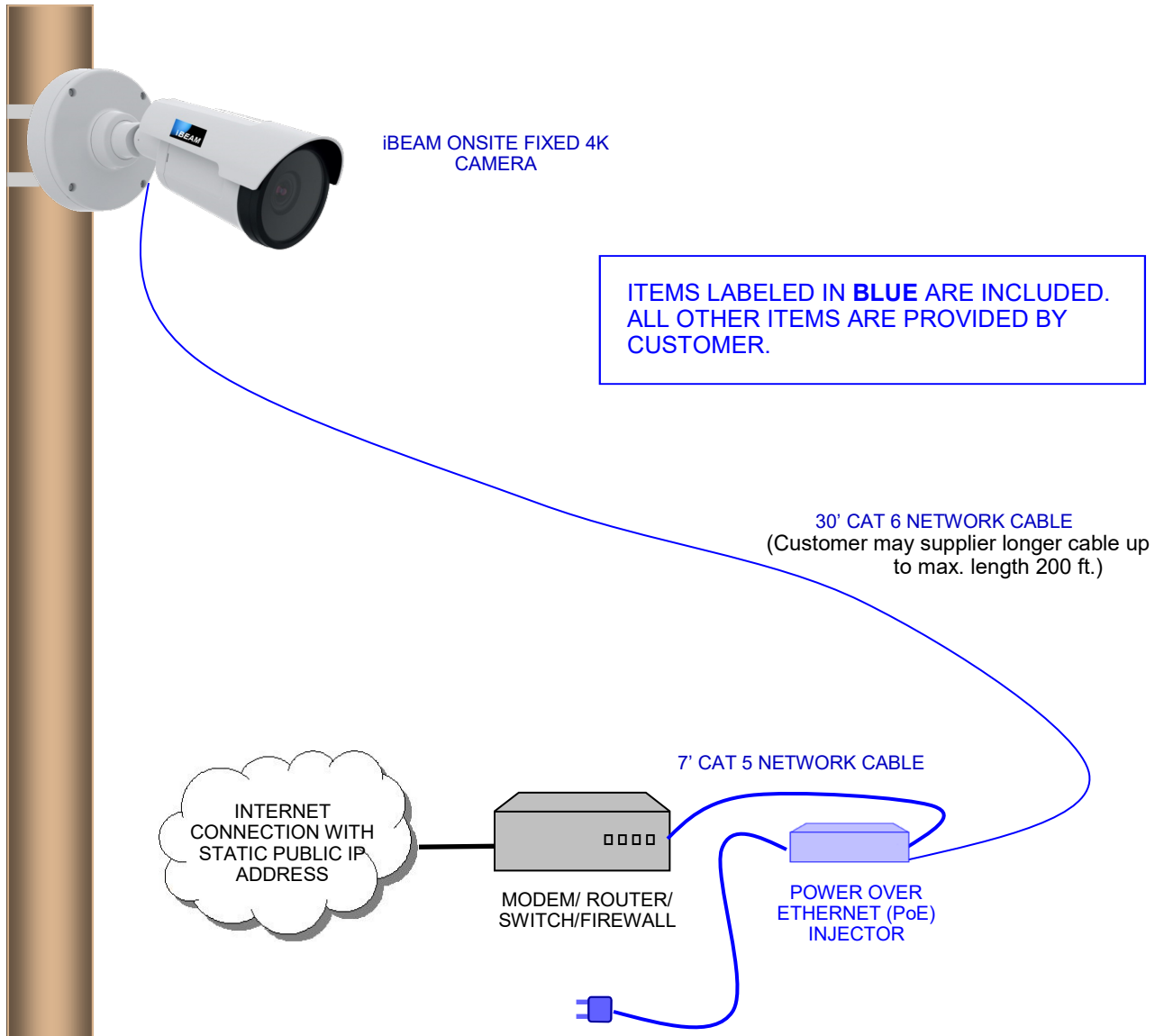
Tighten the nut on cable gland.
4. Plug the unit into 12V power source (solar or battery kit — see separate instructions).
5. View your camera by logging in at www.ibeamsystems.com.

Call the iBEAM Support Team at 1.800.403.0688 to verify installation.



iBEAM CONSTRUCTION CAMERAS

iBEAM® OnSite Fixed™ 4K Construction Camera (Ethernet) INSTALLATION DIAGRAM



**YOUR NETWORK MAY VARY. CONSULT YOUR NETWORK ADMINISTRATOR.

Your iBEAM OnSite Fixed 4K Construction Camera system has been programmed with the IP addresses you provided:

OnSite Fixed 4K Camera: _____

Your camera web page is: www.ibeamsystems.com/camera/_____

800.403.0688

www.ibeamsystems.com



iBEAM® OnSite Fixed 4K Construction Camera with Ethernet Communication

INSTALLATION INSTRUCTIONS

BEFORE YOU BEGIN

1. READ THESE INSTRUCTIONS.
2. TEST THE CAMERA ON THE GROUND. Plug in the camera and confirm proper operation before you install the camera on your mounting surface.

Getting Started

Remove all components from shipping box.

Install the Camera

Attach the camera to the mounting surface (pole or wall) using the supplied hardware.

Connect network cable from the camera to the Power Over Ethernet injector where indicated (to camera).

Connect network cable from your modem/router to the Power Over Ethernet injector where indicated (to network).

Plug the Power Over Ethernet injector into 120V power.

See manufacturer's Installation Guides for detailed instructions.

Configure your Network

Your network must be configured to allow outside traffic to the camera. The most common method for this is to use port forwarding on your network's router to forward all outside requests on port 80 to the camera's network IP address. See other side for the camera's network IP addresses.

SEE INSTALLATION DIAGRAM ON PREVIOUS PAGE