

Installation Guide:

iBEAM Fixed 4K Camera with Cellular Communication

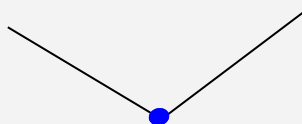
1. Attach your camera to a pole or other mounting surface using the provided straps.
2. Attach communication box to pole/mounting surface using the provided straps.
3. Gently pull the cable gland out of its seated location, then feed the network cable into the box and reseal the gland.
4. Plug the network cable into the open port of the PoE power supply.
5. Plug the unit into the appropriate power source as indicated on the PoE power supply.
6. After the camera has been mounted and plugged in for 15-20 minutes, you will receive an email* with information regarding how to view your camera.
7. ***If you don't see this email from our Support Team, please reach out to them at 800.403.0688 ext. 2 and they can verify the system is online.**

The Support Team is available Monday through Friday 8:00 am - 5:00 pm Mountain Standard Time. When calling, if they're assisting another customer please leave a voicemail and they'll return your call as soon as possible.

8. *Enjoy!*

Approximate Angle of View Estimator

Use this template on your site plan to estimate the approximate view from different locations.



109° horizontal viewing angle

Max 288' of horizontal view for every 100' of distance from the project

57° vertical viewing angle

Max 152' of vertical view for every 100' of distance from the project



MOUNTING SPECIFICATIONS

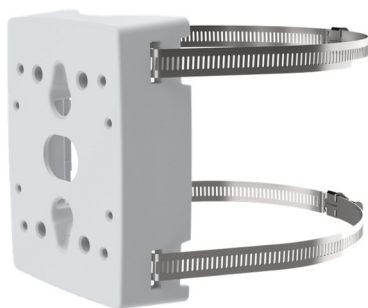
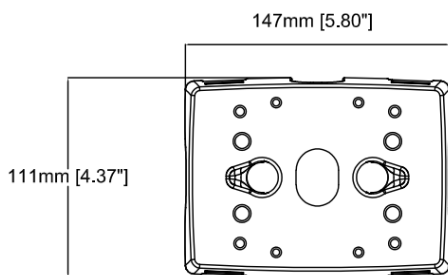
The iBEAM Fixed 4K Construction Camera includes mounting hardware designed for poles with a diameter of 1 1/2 - 16 in. It can also be mounted to beams.

For additional questions or support with your iBEAM Fixed 4K camera, contact our support team:
800.403.0688 x 2



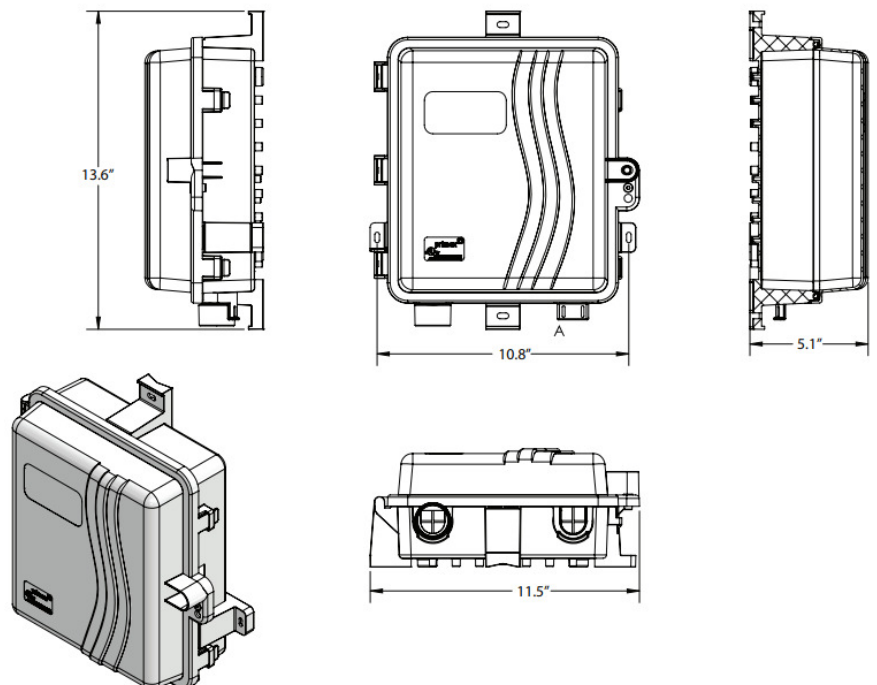
Pole Diameter	1 1/2 - 16in	Environment	Indoor Outdoor
Maximum Load	15 kg (33 lb)	Dimensions	132 x 280 mm (5.2 x 11.0 in)
Casing	NEMA 4X– and IK 10-rated powder-coated aluminum mount Color: white NCS S 1002-B	Weight	1.2 kg (2.65 lb) without steel straps

Camera Pole Mount



Camera pole mount (preassembled)

Comm Box Pole Mount



800.403.0688

www.ibeamsystems.com