



NEW!

Installation Guide:

iBEAM Fixed 4K Premier Camera with Ethernet Communication

TEST YOUR CAMERA'S NETWORK SETTINGS BEFORE INSTALLING THE CAMERA:

1. Connect the PoE Midspan to a power source near your network connection.
2. Connect the *DATA IN* port on the PoE Midspan to your network using the provided CAT5(e) network cable.
3. Connect the camera's network cable to the *DATA POWER OUT* port on the PoE Midspan.
4. Verify your network's forwarding settings by trying to reach the camera at the Static WAN IP address your IT department provided to iBEAM on the New Project Setup Form.

CONTACT YOUR IT DEPARTMENT FOR HELP IF YOU CANNOT REACH THE CAMERA AS EXPECTED

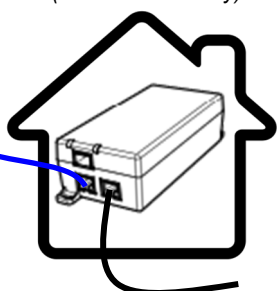
AFTER YOU HAVE SUCCESSFULLY TESTED THE CAMERA'S NETWORK SETTINGS, PROCEED WITH INSTALLATION:

1. Disconnect the camera's network cable from the PoE Midspan.
2. Attach the camera to a pole or other mounting surface using the provided straps.
3. Reconnect the camera's network cable to the *DATA POWER OUT* port on the PoE Midspan.
4. After the camera has been mounted and plugged in for 15-20 minutes, you will receive an email* with information regarding how to view your camera.

*If you don't see this email from our Support Team, please reach out to them at 800.403.0688 ext. 2 and they can verify the system is online.

The Support Team is available Monday through Friday 8:00 am - 5:00 pm Mountain Standard Time. When calling, if they're assisting another customer please leave a voicemail and they'll return your call as soon as possible.

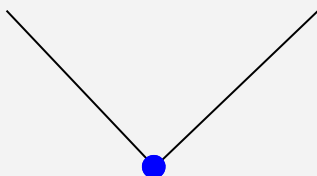
PoE Midspan
(for indoor use only)



(25' CAT6a STP
network cable provided)

Approximate Angle of View Estimator

Use this template on your site plan to estimate the approximate view from different locations.



90° horizontal viewing angle

Max 200' of horizontal view for every 100' of distance from the project

49° vertical viewing angle

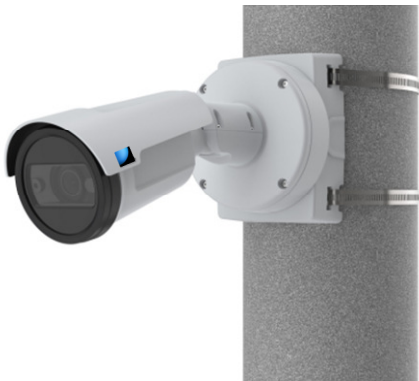
Max 91' of vertical view for every 100' of distance from the project



MOUNTING SPECIFICATIONS

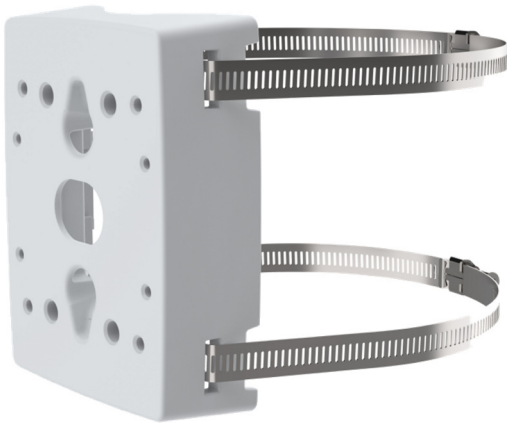
The iBEAM Fixed 4K Premier Construction Camera includes mounting hardware designed for poles with a diameter of 1 1/2 - 16 in. It can also be mounted to beams.

For additional questions or support with your camera, contact our support team:
800.403.0688 x 2



Pole Diameter	1 1/2 - 16in	Environment	Indoor Outdoor
Maximum Load	15 kg (33 lb)	Dimensions	360 x 147 mm (14 11/64 x 5 13/16 in)
Casing	NEMA 4X– and IK 10-rated powder-coated aluminum mount Color: white NCS S 1002-B	Weight	2.55 kg (5.3 lb) without steel straps

Camera Pole Mount



Camera pole mount (preassembled)

